

THE CUT.

STARTERS

- OYSTER, PINK PEPPERCORN MIGNONETTE / 5.5 EACH
- ORTIZ ANCHOVY, TOMATOES, BREAD / 9 EACH
- TUNA CRUDO, SHALLOTS, PEANUTS, FERMENTED CHILLI / 28
- CRAB CAKES, BÉARNAISE / 29
- CUTTLEFISH, ANDOUILLE, SEA HERBS / 26
- CHICKEN LIVER PARFAIT, RADISHES, PEACH PUREE / 28
- JAMON SERRANO, RED EYE MAYO, BISCUITS / 32
- BEEF TARTARE, BAGNA CAUDA, ESHALLOTS / 26
- BURRATA, EGUSI, CUCUMBER / 26

SALADS

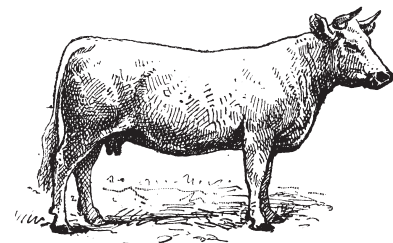
- MIXED LEAF, PALM SUGAR VINAIGRETTE / 12
- COS, WALNUTS, GRAPES, BLUE CHEESE / 19
- TOMATO, WATERMELON, FETA / 18
- NECTARINE, CELERY, WATERCRESS, PECORINO / 16

SANDWICHES

- THE CUT SIGNATURE CHEESEBURGER / 24
- PRIME RIB FRENCH DIP SANDWICH / 22

CHARCOAL GRILL

- "SHRIMP & GRITS" KING PRAWNS, RED PEPPER, PRAWN OIL / 32
- EGGPLANT, TOMATO JAM, GOATS CURD / 24
- VEAL TONGUE, RED PEPPER SAUCE, HORSERADISH / 22
-
- BORROWDALE PORK CHOP, SAGE, GARLIC BUTTER 350G/ 35
- SOVEREIGN LAMB RUMP, SAGE, GARLIC BUTTER 380G / 52
- CAPE GRIM GRASS FED FILLET 250G/ 56
- DRY AGED RANGERS VALLEY SIRLOIN 400G/ 78
- DRY AGED CAPE GRIM GRASS FED RIB EYE / MP



PRIME RIB

Slow Cooked Prime Rib off the Bone,
Grainge Signature, Angus and Wagyu Cross,
Grain Fed, Riverina

- STANDARD CUT 300G / 59
- THE CUT 400G / 79
- SUPER CUT 500G / 99

SERVED WITH

VEAL JUS, HORSERADISH
CREAM AND MUSTARD

subject to availability

FISH

MARKET FISH, PIPPIES,
GRENOBLOISE SAUCE /MP

SIDES

- CORN, CHILLI OIL, FARRO / 14
- CREAMED SPINACH, PECORINO / 12
- SEASONAL GREENS / 12
- SHOESTRING FRIES / 10
- TATOR TOTS, BUTTERMILK MUSTARD SAUCE / 14
- POTATO, BACON, SHALLOTS / 15
- MASH AND GRAVY / 14

SAUCE ALL \$4

BÉARNAISE | PEPPERCORN
BLUE CHEESE | VEAL JUS

ALL CREDIT CARD TRANSACTIONS INCUR A PROCESSING FEE OF 1.0% TO 1.5% ALL DEBIT CARDS INCUR A PROCESSING FEE OF 0.5% TO 1.0%. ALL EFTPOS NO CHARGE. 'TAP AND GO' INCURS DEBIT/CREDIT CARD FEE 10% DISCRETIONARY SERVICE CHARGE APPLIES TO ALL GROUPS OF 10+. 10% SURCHARGE APPLIES ON SUNDAYS. 15% SURCHARGES APPLIES ON ALL PUBLIC HOLIDAY